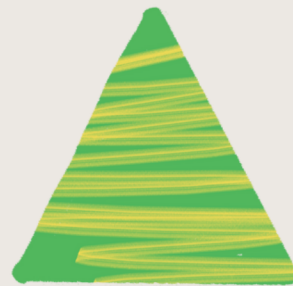




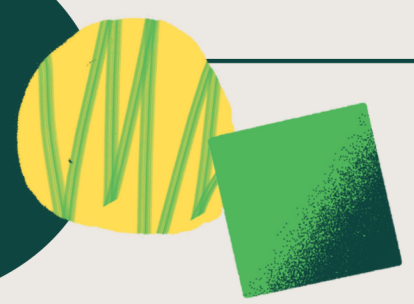
# HomeBuilders

---

*KIDS ON TRACK  
PARTNERSHIP PACKAGE*



# HomeBuilders Partnership Package



## Who Are We?

Founded in 1992, Kids On Track is a **Christian community-building organization** that provides hope, direction, and ongoing support for children, youth, and their parents. Educational, social, spiritual and recreational elements are combined to deliver well-rounded programs with a purpose.

We cultivate relationships, encouraging participants in faith, character and leadership development, social skills, and a healthy lifestyle. We strive to support families experiencing limited opportunities due to various socioeconomic challenges.

HomeBuilders began as a stand-alone program at Kids On Track and has developed into a partnership model where we can **equip** and **empower** the **local church to provide hope and practical coping skills** in the face of trauma and family disruption.

## Why Partner With Us?

**We see HomeBuilders as an arm of the local Church, of your local church.**

Thinking about what our HomeBuilders Partnership Package was going to look like, we wanted to make sure that it was clear that partnering with Kids On Track is a **benefit for local churches**. We know that churches are often challenged in time and resources. Our goal is to come alongside the local church and equip and train you to reach the families in your community with an easy to implement curriculum and program framework.

**Partnering with Kids On Track is a win-win.** Churches can extend their reach beyond traditional services and programs and make a meaningful impact in the lives of children and families. HomeBuilders becomes the entry point for families to find support and care, allowing the natural progression from an unchurched community into the local church family.

**Partnering with HomeBuilders furthers God's work in your community** and gives kids, youth, and their parents an opportunity to encounter Jesus.

# Why HomeBuilders?

## 1 BUILDING RESILIENCY, ONE CHILD AT A TIME

When significant change or challenge happens in the life of a child, it's necessary that they are equipped with skills to increase resiliency, work through their big emotions, and **process grief** in a **healthy manner**. HomeBuilders helps prevents kids with adverse childhood experiences from making high-risk decisions and forming high-risk relationships.

## 2 KIDS LEARN BETTER WHEN THEY MOVE

HomeBuilders is not a sit/listen/learn type of program; it's a move/sing/play/explore kind of program! **There are no bored kids here** - we are learning and moving. Physical literacy is integrated into each lesson. We use music, art, play, and games with a purpose while facilitating the discussions needed to teach children how to implement the coping skills they are learning.

## 3 EQUIPPING PARENTS, NOT JUST THE CHILD

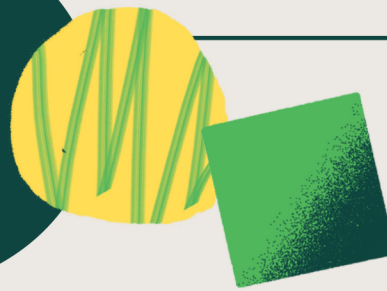
This is not a parenting seminar! Rather, parents participate in their own interactive group. They learn how to **support their children** through change, transition, or difficult times by implementing coping skills at home with **simple, fun, and engaging activities**.

## 4 SIMPLE TO IMPLEMENT

All curriculum and additional resources are available to partner churches through our HomeBuilders website. As we improve and add to HomeBuilders, new versions of the program are uploaded to our partner portal. **HomeBuilders is easy to implement**. Most churches will already have the needed supplies on hand, or they can be easily purchased at a dollar store.



# What Does It Look Like?



## OVERVIEW

- HomeBuilders runs for 11 Weeks at approximately 1.5 hours per week
- Hands-on activities, songs, stories, crafts, and games are built in to every lesson
- Practical coping tools are taught each week - child participants receive a take-home reminder of the coping tool they learned that week
- Weekly Home Challenge Activities are given to parents/guardians to reinforce class lessons
- A HomeBuilders Party is hosted as a wrap up session where HomeBuilders Certificates are handed out in celebration of what participants learned

## THEMES

1. **Self-Esteem** - I Am God's Building Project
2. **Grief** - I Am Not Alone
3. **Emotions** - All My Feelings Matter
4. **Sadness**- My Sad Isn't Bad
5. **Anger**- My Mad Isn't Bad
6. **Blaming & Letting Go** - It's Not My Fault
7. **Guilt & Forgiveness** - I Will Leave It In God's Hands
8. **Worries & Fears** - Don't Worry, Trust Jesus
9. **Transitions** - Changing Is Rearranging
10. **Hope & Next Steps** - I'm Movin' Forward
11. **Endings & Beginnings** - I've Got The Keys + Party

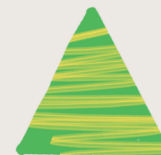
## 3 STREAMS



Divorce/Separation



Bereavement

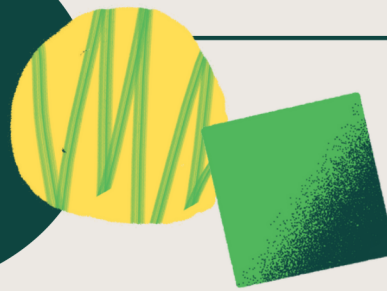


Resiliency

## OUTCOMES

- Children learn to understand and express their emotions appropriately
- Children gain an understanding of change and how to respond to it
- Children learn coping tools to respond to the changes happening in their family
- Parents will gain a better understanding of the adjustments their children are facing
- Parents will learn what supportive behaviours are helpful to their children

# Pricing



We want to make HomeBuilders available for all churches, large and small. We are acutely aware that churches often have to make tough decisions when it comes to budgeting for curriculum. HomeBuilders is **affordable, accessible**, and intentionally designed to be **easy to implement**. You will receive:

- 11 weeks of curriculum for each of the three streams (both kids and parents/guardians) including ideas for the HomeBuilders party on week 11
- Home Challenge Activity instructions for each week
- Additional resources such as suggested songs and books, and a link to YouTube playlists
- Facilitator Training Manual (10 modules)
- Access to our HomeBuilders staff for support

Annual Budget	Suggested Price/Year
\$0 - \$250,000	\$200
\$250,001 - \$400,000	\$400
\$400,001 - \$650,000	\$600
\$650,001 - \$1,000,000	\$800
\$1,000,001 +	\$1000
Full Guided Facilitator Training (12 hours)	\$1000

You will notice that we say “suggested price” as opposed to setting a firm price. We offer levels of pricing based on your church’s annual budget and we are always **open to conversations** about how we can get these lessons into your hands!

# FAQs



## **Can I use parts of the HomeBuilders curriculum for Sunday School or Kids Church?**

No. The curriculum is designed intentionally in a specific order of lessons with respect to the psychology behind group stages, particularly in children and youth. Because of the sensitive nature of our lesson plans, only trained facilitators are allowed to present the material. Additionally, parents have given permission to address these topics with their children in HomeBuilders. The intense emotional themes are best addressed in the HomeBuilders environment.

## **Who leads the sessions? Can we use facilitators if they haven't been trained by Kids On Track?**

Classes are facilitated by volunteers who have been trained in the HomeBuilders curriculum. Each facilitator must go through the manual on their own and touch base with the main HomeBuilders representative of your church or attend in-person training sessions with a HomeBuilders Trainer. While facilitators will be trained in areas like behaviour management, group stages, and the empathetic response, they should have some experience working with children.

## **Can we facilitate HomeBuilders in less than 11 weeks?**

We find that 11 weeks is just long enough to get through the program. However, there is an option to host Week 11 as a stand-alone lesson week and host the HomeBuilders Party separately to extend the program to 12 weeks as opposed to 11.

## **Can we run HomeBuilders with just one facilitator in each class?**

For the safety of the participants and the facilitators, we strongly recommend that each class has two facilitators. Most insurance companies require two adults in a classroom setting as well. One person can certainly be the lead facilitator and the other as a support if you have a volunteer who prefers not to teach.

## **Can siblings be in the same class?**

While sometimes unavoidable, it is strongly recommended to put siblings into different classes. This allows each sibling their own space for learning and healing.

## **How many children are in each class? How are participants split up into classes?**

We recommend to register up to ten participants in each class with an understanding that a few may drop from the program. We also recommend that you do not host a class with fewer than three participants as most activities require multiple participants. Classes are recommended to split into Level 1 (grades 1-2), Level 2 (grades 3-4), Level 3 (grades 5-6) and Level 4 (grades 7+). If there are high schoolers and junior high schoolers, it may be helpful to split into two different classes as long there are enough registrants for each group.

## **What space is required?**

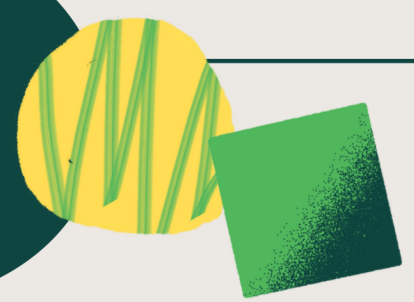
Each class should have their own classroom space, with a large, open area to facilitate games and activities that are offered with each lesson plan. The Parent group needs less room as the activities tend to be around a table.

## **Are there religious elements to the program?**

Yes. Each lesson plan will include prayer time, Christian songs, and will have a through-line of the basic Christian worldview.



# What are people saying about HomeBuilders?



## “HomeBuilders did exactly what the name suggests...”

...It helped **restore my home** so that we have had a little bit more peace, understanding, and balance once again. My child and I both will leave HomeBuilders with the tools to find our way through the grief cycle together.

I think that is what made the program so effective and helpful.”

“He can tell me how he is feeling and express it in a better manner.”

“The last few years have been hard for my kids and me. When my husband passed, we got stuck. Now, **I look forward to moving forward.**”

“It gave me **a safe place** to let go of all my feelings. I was able to then focus on the children more during the week after using this self-care.”

“The change in my daughter has brought me to **tears of joy** on more than one occasion.”

“Sometimes when a family crisis and breakdown occurs a parent can feel really low and it can feel like they are a bad parent. The welcoming, **positive environment** that was provided on day one really helped to highlight there is **hope** for single-parent families.”

“Her teacher even commented on the changes, how much better she seems.”

“We did see a **huge change in the children** from when they started until they finished. I feel like each child learned something in a specific area.”

“You gave us so many great strategies and **simple hands-on tools** to support our children through this challenging time.”

“I feel so cared for here - it is **restoring.**”

**Ready to get started?**

**Connect with us TODAY!**

587-404-8877

[homebuilders@kidsontack.org](mailto:homebuilders@kidsontack.org)